

Lithonia High School Band Booster



Band Student Handbook

2017-2018

Band Director

Mr. Michael Lloyd

Table of Contents

LHS Band Director Biography	page 4
Band Membership	page 5-6
LHS Marching Band Requirements for Membership	page 7
Band Member Responsibilities	page 8
Attendance Policy	page 9
Rehearsal Conduct	page 10
Performance and Travel Conduct	page 10-11
Discipline and Consequences	page 11
Practice and Rehearsals	page 12
Rehearsal Schedule	page 13
Performances	page 13
Facilities	page 14-15
Instruments	page 15
Equipment Policies and Procedures	page 15
Guidelines for Being a GREAT Band	page 16

Student Leadership	page 17-19
LBBBA Purpose and Mission Statements	page 20
LBBBA Primary Purpose	page 21
LBBBA Executive Board Members 2017-2018	page 22
LBBBA Organizational Chart	page 23
Band Member Pledge	page 24
Instrument Check-Out Form	page 25
Student Registration Form	page 26
LHS Varsity Football Schedule & Events	page 27
LHS and LBBBA Contact Information	page 28

Lithonia High School Band Director Biography

Mr. Michael Lloyd is a native of Atlanta, GA. He graduated from the Performing Arts Magnet



program at North Atlanta High School. He has played the trombone and tuba in several bands. He was a member of the GMEA 5th District Honor Band, and served as a drum major for North Atlanta High School.

Mr. Lloyd graduated Magna Cum Laude from Tennessee State University, where he majored in Music Education. He was a founding member of the Tuba Den ensemble. The ensemble performed for MENC national Convention in Nashville, TN in 2002. While at Tennessee State, Mr. Lloyd served the band as a drum major. The TSU band

performed for the Country Music Awards in 2005. Mr. Lloyd was also a member of the Phi Mu Alpha Sifonia International Music Fraternity, Alpha Kappa Mu Academic Fraternity and the Gold Key International Honor Society.

Mr. Lloyd is a member of MENC/GMEA and NEA. He has served as the Music Theory instructor for the Urban Youth Harp ensemble in Atlanta. He is married to Mrs. Robin Jones-Fuqua Lloyd and they are parents of a daughter.

Assistant Directorial Staff

Mrs. Robin Lloyd

Golden Elegance

Mr. James King

Drum Majors / Announcer

Mr. Thomas "T.J" Woolfolk

Percussion

Mr. Thomas Philpot

Percussion

BAND MEMBERSHIP

Membership in the Lithonia High School band is open to all students enrolled at Lithonia High School. Students who join the band are expected to exhibit the highest standards of excellence in musicianship, scholarship, citizenship and personal deportment. The ensembles that constitute the complete band program at Lithonia High School are follows:

- Concert Band
- Marching Band
- Jazz Band
- Pep Band
- Orchestra

Concert Band

The Lithonia High School concert band is the fundamental ensemble of the band program. Participation in any of the extra-curricular band activities requires that the student is a member, in good standing, of the concert band. Concert band meets as a class session. It is required that students are enrolled in a band class in order to be a part of the band program. Instrumental band classes available at LHS include:

- ◇ **Advanced Band** - For students in 10th, 11th and 12th grades who reached the technical ability on their respective instruments that they are capable of playing grade 4, 5 and 6 music levels.
- ◇ **Intermediate Band** - For students in 9th grade and other students, as selected by the Band Director.
- ◇ **Beginning Band** - For students with little, or no, experience playing an instrument.
- ◇ **Percussion Class** - For percussionists with differing levels of experience.

There are two ensembles at LHS that are defined as concert bands:

- ◇ **Symphonic Band** - Is comprised of students from the Advanced Band class, the more technically advanced players from the Percussions Class, and other students as selected by the Band Director.
- ◇ **Concert Band** - Membership is comprised of students from the Intermediate Band class, selected members of the Percussions Class and other students as selected by the Band Director.

Each of the concert bands play 4 or 5 performances outside of the regular school day, each year, including:

- Annual PTSA Winter Holiday Concert - December
- Pre-Festival Concert - February or March
- Annual GMEA Large Ensemble Festival - March
- Annual Spring Concert - May

Marching Band

Membership in the Marching Band is open to any student enrolled at Lithonia High School who is also taking a band class. Other students may participate in the Marching Band as auxiliary members. The Lithonia Marching Bulldogs perform an average of 15 times a year at football games, band festivals, community events and parades. The Marching Band has performed at major event in New Orleans, Birmingham, Daytona Beach, Charlotte and Atlanta.

Jazz Band

The Jazz Band membership is open to any student in a band class at LHS. The ensemble's focus is playing a variety of music in the jazz styles. The Jazz Band performs periodically during the school year and participates in the Melvin Hodges Jazz Festival and the GMEA District IV Jazz Festival.

Pep Band

The Pep Band performs at several of the home varsity basketball games. Membership is open to any member, in good standing, of the Lithonia High School band, and who is currently enrolled in a band class.

Orchestra

The orchestra membership includes student musicians in the strings class, as well as wind instrument players (flute, clarinet, oboe, saxophone, trumpet, French horn, trombone and tuba) and percussionists selected by the band and orchestra director. The Orchestra performs music from the classics, as well as some more contemporary compositions. Performances include:

- Annual PTSA Winter Holiday Concert - December
- Pre-Festival Concert - February or March
- Annual Spring Concert - May

LHS MARCHING BAND REQUIREMENTS FOR MEMBERSHIP

In order to be a member in the Lithonia High School Marching Band you must:

1. Be a student in good standing at Lithonia High School or Lithonia Middle School who is enrolled in a band class. Lithonia High School students who are unable to schedule a band class because of an academic class conflict can participate with the band director's permission. Lithonia Middle School students must be recommended by their band director.
2. Be in regular attendance at all practices and performances and abide by the attendance policies of the Band as set forth in the Lithonia High School Band Handbook.
3. Maintain acceptable academic progress as defined by your parents and the band directors.
4. Maintain exceptional behavior and personal discipline both in school and outside of school.
5. Consistently work hard to improve your musicianship skills. You are expected to always perform your music and marching/choreography maneuvers to the best of your ability.
6. Provide all paperwork and forms including but not limited to emergency medical information, parent contact information and a permission slip signed by your parent/guardian giving you permission to participate.
7. In Addition to these requirements, members of the Auxiliary Unit (a.k.a. "Golden Elegance") must be selected for membership through an approved try-out process in the spring prior to the marching band season.

BAND MEMBER RESPONSIBILITIES

1. Be present and on time for every rehearsal. Account for any absences.
2. Be prepared and ready for practice. Have everything you need ready before rehearsal starts, including instruments, music, writing instruments, notebook, practice clothing, etc.
3. Make a genuine effort to learn and improve daily.
4. Learn music to perfection. Play the music to best of your ability.
5. Learn all drill sequences. Execute the sequences with absolute precision.
6. Take practices seriously. Perfect practices make for perfect performances.
7. Always show respect and consideration for everyone involved in the band program, including directors, booster club representatives, parents, supporters and other students.
8. Cooperate with fellow band members and, with them, share responsibilities and privileges that are part of the band program.
9. Do your part to keep the band room neat and clean; to properly maintain the equipment (instruments, chairs, music stands) and music.
10. Be responsible for your actions. Be prepared to accept the consequences of your actions.
11. Follow all classroom rules and regulations, as well as all travel instructions issued for trips.
12. Meet financial responsibilities to the band. All band members are required to pay dues in order to absorb the cost of participation in the band. There will be several opportunities to participate in fundraisers to help off-set band expenses.

ATTENDANCE POLICY

In order to participate in band performances, attendance at all practices is required.

1. If a band member misses one (1) practice during a week, with an **excused** absence, he/she may attend and perform with the band -- but at the Band Director's discretion. Missing the final practice day prior to a performance will always prevent the band member from performing and the coming event.
2. If a band member misses two (2) practices during a week, with an **excused** absence, he/she may attend the event with the band, but will not be permitted to perform with the band.
3. If a band member has any **unexcused absences** from band practice, he/she will not be permitted to attend the event with the band, or perform with the band.
4. Any band member who collects more than three (3) **unexcused absences** will be suspended from the band.
5. Excused absences include the following circumstances:
 - a. Personal illness which includes a note from the band member's parent or guardian
 - b. A recognized religious holiday
 - c. The band member's service as a page in the state legislature
 - d. A death in the band member's immediate family

Absences for reasons, other than those indicated above, must be discussed and permitted by the Band Director.

6. Band members who hold after-school employment must make a reasonable effort to schedule work hours to avoid conflicts with scheduled practices and performances.
7. Band members who miss an excessive amount of practices may be suspended from the band program.
8. Band members must attend all performances.
9. To be excused from a performance, the band member must inform the Band Director, in writing, at least one week in advance of the planned absence. An exception will be made if there is a personal illness on the day of the performance, with a written note from the band member's parent or guardian. The Band Director will consider the request and decide on whether the absence is permitted.
10. An unexcused absence from a performance may result in the band member's suspension for the remainder of the season.
11. Excessive absences from performances -- three (3) or more -- will result in suspension from the band for the remainder of the season.

REHEARSAL CONDUCT

1. Band members are expected to arrive at rehearsal and/or classes on time and prepared.
2. Every band member is responsible for bringing, and maintaining, his/her own equipment (instrument, mouth piece, drumsticks, etc.) music notebook and any other necessary equipment to every rehearsal and performance.
3. Warm-ups will be done as a group with the full band, or in sectional units, under the direction of the Band Director or an appointed subordinate.
4. Band members are NOT permitted to talk during rehearsals!
5. There shall be no excessive walking or moving about during rehearsals.
6. Chewing gum, eating and drinking is not permitted, and will not be tolerated, during rehearsals.
7. Band members should wear non-restrictive clothing and appropriate shoes to all rehearsals. The customary and preferred attire for marching band rehearsals is a white t-shirt, black shorts, or warm-up pants, tennis or marching shoes. JEANS are NOT permitted.
8. Band members are not permitted to wear sunglasses, or other non-essential items, during rehearsals, or while in uniform at performances.
9. Only the Band Director is permitted to call and dismiss band rehearsal.

PERFORMANCE AND TRAVEL CONDUCT

1. Band members are to arrive at the appointed time with the appropriate performance attire.
2. Band members may not wear jewelry (other than a small watch) conspicuous nail ornamentation, or excessive make-up while in uniform.
3. Band members are expected to comply with the pre-performance schedule.
4. All instruments are to be completely cleaned and ready for inspection two (2) hours prior to performance time.
5. Band members may not leave band formation, for any reason, without the consent of the Band Director.

6. While in the stands at performances, band members are permitted refreshments only with permission of the Band Director.
7. Band members are not permitted to eat, while in uniform, without the permission of the Band Director.
8. When traveling with the band, band members must remain with the band, unless prior arrangements have been approved by the Band Director. The Band Member must inform his/her bus chaperone.
9. All band members are expected to participate in all band activities while traveling with the band.
10. Band members are not permitted to wear sunglasses, or other non-essential items, while in uniform and traveling with the band.

DISCIPLINE AND CONSEQUENCES

Discipline is essential to developing a quality musical organization. All band members are expected to maintain an elevated level of personal discipline at all times.

All band members are expected to comply with the rules, policies and procedures of the DeKalb County School System and Lithonia High School, as outlined in the Student Code of Conduct and the Lithonia High School Student Handbook. Furthermore, all band members are expected to comply with the rules, policies and procedures of the Lithonia High School band program.

Band members who are disruptive in rehearsal, or who fail to comply with band attendance policies may expect the following consequences:

- A warning
- Physical exercises
- Extra duty, such as cleaning the band room or practice areas
- Conference between the Band Director, the band member and the band member's parent(s) or guardian
- Suspension from one or more performances
- Referral to a school administrator
- Permanent suspension from the band program

PRACTICES AND REHEARSALS

Attendance at every band practice session is required. The Lithonia High School Band has a high level of expectation for the quality of our performances. To consistently achieve the outstanding performances, for which we have become known, it is imperative that all band members adhere to these guidelines and expectations for the band's practice sessions.

1. **Practice the way you plan to perform.** Your attitude during practice sessions determine the quality of the performance you will give. When you practice in a tired and lazy manner, your performance will be tired and lazy. When you practice, making a 100% effort to march perfectly and play all the musical notes, the end result will be an incredible performance. **“Practice doesn’t make perfect; perfect practice makes perfect!”** - *Dr. William Foster, Founder and Director Emeritus of the Florida A&M “Marching 100”*
2. **Come prepared to practice.** Bring your instrument, music and a pencil to every practice session. You wouldn’t go to a performance without your instrument, so do not attempt to attend practice without it!
3. **Dress appropriately.** Standard attire for marching band rehearsals are a white t-shirt and black shorts (not jeans), athletic socks and tennis shoes (low-top cross trainers are best). When the weather is cool, sweat suits are recommended.
4. **Be on time.** The posted rehearsal time is the time that practice BEGINS -- not the time you are expected to arrive in the band room. Get to rehearsal early so that you may get your instrument, music and pencil, be in your seat and ready to start when the down beat is given.
“Early is on time and on time is LATE!”
5. **Remember the three C’s.** **COOPERATION:** One of the essential elements to making great music is to start with quiet. Practice time is most effectively used when every band member remains quiet throughout the rehearsal. Do not talk, unless you are speaking to the Band Director. Once the rehearsal starts, remain in your seat. Movement around the room creates distraction that interrupts the rehearsal process. **COMMITMENT:** The success of the band is dependent upon the level of commitment of each band member. The quality of any performance is directly related to how well the band members work together to achieve their common goal. **CONSISTENCY:** To work hard at rehearsal on one day, but practice lazily at the next rehearsal will yield poor results. In order to be successfully, it is essential to rehearse consistently with superior work habits.

REHEARSAL SCHEDULE

Concert Band Rehearsals take place during the regular school day as a part of the band class. In addition to the class rehearsals, sectional rehearsals are usually scheduled for after school. Members of the concert band are expected to participate in their sectional rehearsal once a week, from 3:30 pm to 6:30 pm. During sectional rehearsals, students will learn techniques specific to his/her instrument, work out technical problems with their individual parts to the music being studied in class, and prepare for performance selections of small ensemble music.

Jazz Band Rehearsals are held twice a week. The schedule for Jazz band rehearsals will be announced in mid-November.

Pep Band Rehearsals are held as needed. The schedule for Pep band rehearsals will be announced in mid-November.

Marching Band Rehearsals are every day after school, from 3:30 pm to 7 pm, from the first day of the school year, until the football season ends (usually mid-November).

PERFORMANCES

The LHS band, and its auxiliaries, give numerous public performances throughout the year, thus, the band is in public eye more often than any other single unit of the Lithonia High School community. Since the band is representing the fine reputation of LHS, it is imperative that band members adhere to the following guidelines.

1. **Dress appropriately.** The Band Director will give you instructions concerning performance attire. Please cooperate and wear the uniform correctly. A large part of the musical performance is visual.
2. **Arrive at the performance early.** The Band Director will advise the band of the specific time for which band members are to report to the site in order to perform. Please arrive early. Band members who arrive late disrupt the warm-up process, causing the potential for a poor performance. Also, when band members arrive late for performances they cause themselves, and their fellow band members, to become anxious -- and anxiety is harmful to a superior performance.

FACILITIES

Band Room

Band members are expected to keep the band room neat and clean. Keep chairs and music stands in place and use the trash cans to dispose of waste items.

Instrument Storage Rooms

The instrument storage room is to be used for storing instruments only. All other items should be stored in the band member's school locker. Keep the storage room neat and clean. Instruments are to be placed in their cases and cases should be closed while in the storage areas.

Midi Lab

The Midi-stations are only to be used by band members when given permission by the Band Director. Requests for lab time should be addressed to Band Director. The door to the door to the lab is to be kept open at all times when band members are in the lab. Computers in the band room are for band activities and band business only (no games or social networking). **Band members are NOT permitted to use the Band Director's computer stations.**

Band Director's Office and Library

The Band Director's office is **private**. Students are only permitted to enter the Band Director's office with the expressed permission of the director. Personal possessions of band members are not to be stored in the Band Director's office. Materials in the director's office are not for band member use -- therefore, band members are prohibited from removing anything from the Band Director's office. Band members are prohibited from opening file drawers, desks or other objects in the office.

Practice Field and Outside Practice Areas

All practice areas must be kept neat and clear of debris. Equipment (chairs, music stands, instruments, etc.) moved outside from the band room, must be returned inside and stored in its proper place at the end of the practice session. Remote practice sites should be cleaned and inspected immediately at the conclusion of the practice session.

Executive Board's Office (LBBBA, Inc.)

The Executive Board's office is **private**. Students are only permitted to enter the Executive Board's office with the expressed permission of the Board. Personal possessions of band members are not to be stored in the Executive Board's office. Materials in the Executive Board's office are not for band member use -- therefore, band members are prohibited from removing anything from the Executive Board office. Band members are prohibited from opening file drawers, desks or other objects in the office. All financial transactions will take place in this office at designated dates/times.

INSTRUMENTS

The Lithonia High School band, through the school administration and governing bodies, has acquired instruments for the marching and concert bands. The instruments are new, or refurbished, and must remain at Lithonia High School, unless a release form is provided and signed by the Band Director. Wear on instrument, through normal usage, is expected. However, major damage, due to negligence and/or improper treatment of the equipment, is unacceptable.

EQUIPMENT POLICIES AND PROCEDURES

(includes cases and accessories)

1. Band members who receive assigned instruments, should carefully inspect the instrument, check the serial number, test all slides, valves, keys, etc., and immediately report any problems to the Band Director.
2. Band members should ask their parent(s)/guardian to check to confirm whether their personal instrument is covered by a homeowner's policy.
3. ***Band members who are assigned Lithonia High School equipment are financially responsible for any damage, repairs or replacement of the equipment. The same is true for lost or stolen equipment and accessories, including cases.***
4. Neither the LHS band, nor the school, assumes responsibility for the private use of instrument storage facilities.
5. All band members, who will require the use of school equipment, must complete a Instrument Check-Out Form (page 28).

Guidelines for Being a GREAT Band

1. Warm up your instrument silently and tune softly before each rehearsal.
2. Constantly assume the position and attitude of attention during each rehearsal and performance, and at any other time the conductor's podium is occupied.
3. Use your eyes to SEE the music and the conductor, your ears to HEAR the music and instruction and your mouth to PLAY your instrument. Make any other movements minimal and inconspicuous.
4. So that you will not be disruptive during rehearsals, only play your instrument when asked, by the Band Director, to do so.
5. Practice playing your instruments for at least 30 minutes each day, outside of rehearsals.
6. Do not be late or absent from rehearsals or performances.
7. Care for your instrument, music, uniform and all other equipment assigned for your use. The items should be kept in good condition and stored properly.
8. Be loyal, honest and courteous in all of your interactions within the band organization and with its leaders.
9. Conduct yourself in such a manner that you exhibit pride in Lithonia High School and are, therefore a credit to the school and to the band program.
10. Love your instrument, your music and this organization as much as you love yourself --because YOU are a reflection of the quality of the band.

STUDENT LEADERSHIP

Elected Officers

President

- The student representative of the band
- Conducts all band Council meetings
- Ensures that meetings are held periodically
- Appoints student committees
- Promotes band activities
- Manages all other student band officers
- Reports, directly to the Band Director, any problems, concerns or suggestions that may improve the band program

Vice President

- Assumes all duties of the band President, when required
- Assists the band President, as necessary

Secretary

- Takes daily attendance
- Communicates important information to band members via e-mail or phone

Historian

- Keeps a band scrapbook; records band activities and history
- Arranges for the videotaping and/or recording of performances

Class Representative (one from each grade level)

- Represents his/her grade level at all band Council meetings

Appointed Officers

Librarian

- Is responsible for the music library and all music: filing, cataloging and issuing

Uniform Manager

- Is responsible for the uniform storage area and all uniforms and accessories
- Regularly inspects uniforms and the uniform storage areas for cleanliness, organization and neatness

Equipment Manager

- Is responsible for arranging chairs and stands for each rehearsal and for each performance. The equipment manager also checks to be certain that all necessary equipment is available.
- Is responsible for all school-owned equipment and instruments. Band members who need to use these items should contact the Equipment Manager, who will issue them an *Instrument and Equipment Assignment Form*.

Drum Majors

- Takes charge of the band in all marching formations
- Assists the Band Director in marching drills
- Supervises the section leaders

Section Leaders

- Are responsible for inspecting his/her respective section for proper uniform, music preparedness, instrument cleanliness and proper marching techniques
- Directs instruction of his/her section rehearsals to help teach the music and marching techniques
- Supervises the Squad Leaders

Squad Leaders

- Assists the Section Leaders by inspecting his/her squad for proper uniform, music preparedness, instrument cleanliness and proper marching techniques

Announcer

- Is responsible for writing scripts for the performances and making all public announcements

Band Council

- The Band Council is comprised on the band officers and class representatives.
- Meets periodically (no less than once a month) to discuss band projects and/or other pertinent issues or problems
- Is responsible for maintaining band *spirit de corps*.

Lithonia Bulldogs Band Booster Association

Purpose and Mission Statements

Purpose Statement

The purpose of the Lithonia Bulldogs Band Booster Association (LBBBA) shall be to bring together band parents and other interested persons to augment, support and promote the Lithonia High School band programs.

– Excerpt taken from Article 1, Section B.1 of the LBBBA Bylaws and Constitution

Mission Statement

It is our mission to enhance both the economic and social environment of the students as well as the faculty of the Lithonia High School Band Program. The overall objective of the LBBBA is to assist in facilitating the goals of our band under the leadership of the band directors. Our mission is to foster an environment that will enhance parental involvement and accountability, and also to increase the level of communication between the members of the band, faculty, the LBBBA, and the community served by the LHS Band Program. It is also our mission to provide the necessary assistance required by the band faculty in fostering a wonderful learning environment as well as a rewarding and enjoyable band experience for our students. It is our goal to meet the need of the student in their totality (mentally, emotionally, physically, and economically). We recognize that the band program is incredibly valuable as it not only helps to train our children musically but also teaches discipline, diligence, organization, leadership, and the ability of working with others to obtain a common goal. These are foundational skills which they will be able to utilize now and continue to build upon as they embark upon their future endeavors (i.e. secondary education).

LBBBA Primary Purpose

The primary purpose of the Lithonia Bulldogs Band Booster Association (LBBBA) is to provide structure and support for all of the Lithonia High School band programs, including the marching band, concert band and the jazz band. The LBBBA is comprised of parents of current and past band members, alumni students and community supporters.

The LBBBA performs most of the administrative and logistical roles of the band program, thereby leaving our band directors to do what they do best – TEACH. To assist the directors and students, the LBBBA heavily relies on the boosters to raise funds, move equipment, coordinate meals and travel, plan and chaperone events -- as well as an assortment of other duties vital to the success of our band.

A band program of the size and quality of the Lithonia High School band **MUST** have support from its boosters. If your student is just beginning his/her participation in the LHS band, you will come to find that you will have frequent interaction with the LBBBA. Each contact with the LBBBA is an opportunity for you to become involved. Perhaps, after reading this handbook, you may find opportunities to volunteer in a way that suits your specific interests and talents. We hope so! Volunteering offers many personal rewards. Share this rewarding experience with your band student – they will not forget that you supported their band experience, and neither will you!

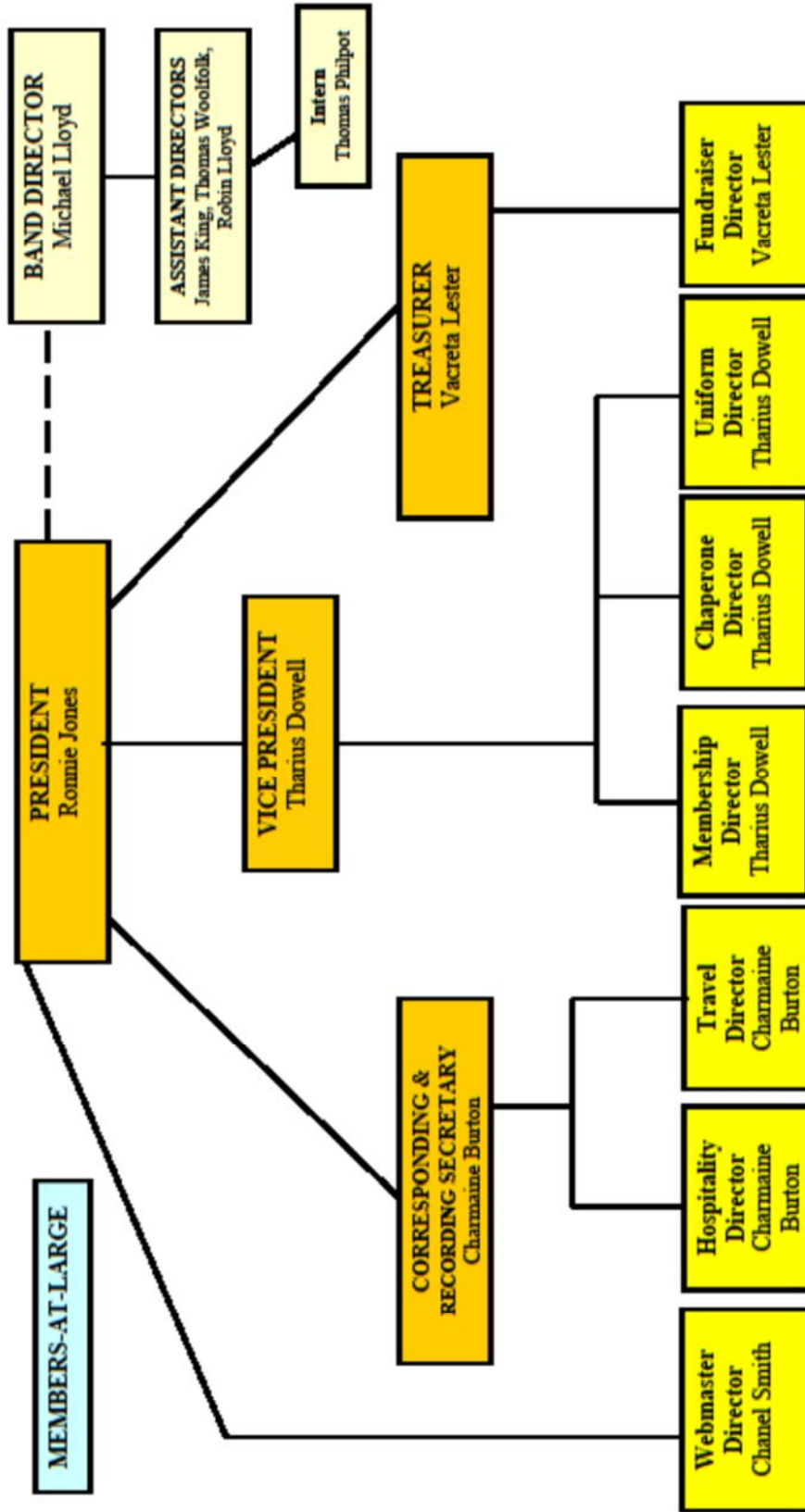
Please feel free to contact any of the LBBBA Executive Board members at any time. We are volunteers, who care deeply about the LHS band program and we are here to serve the band and band parents in any way needed. Hopefully, you'll join us!

Welcome to the Lithonia High School Band program!

LBBBA Executive Board Members 2017-2018

Title	Name	E-mail
President	Ronnie Jones	lithoniaband@gmail.com
Vice President	Tharius Dowell	lithoniaband@gmail.com
Treasurer	Vacreta Lester	lithoniaband@gmail.com
Corresponding & Recording Secretary	Charmaine Burton	lithoniaband@gmail.com

Lithonia Bulldogs Band Booster Association Organizational Chart 2017-2018



Subcommittee Directors

LHS Band Directors & Staff

Executive Board Members

Color Key:

Band Member Pledge

On my honor, I promise to be respectful of my leaders, honest in my dealings with others, considerate of my peers, cooperative in all matters, mature in my conduct and prideful of everything that I must do.

I will strive to always put forth my best effort in practices and performances. I will abide by all the rules and procedures of the band. I will endeavor to live up to the responsibilities and ideals inherent in being a member of the Lithonia High School band.

Student: _____ **Date** _____

Signature

Acknowledgement of Receipt of Band Handbook

I have received a copy of the Lithonia High School Band Handbook, and I accept the terms and conditions set forth herein regarding my participation in the Lithonia High School band.

Student: _____ **Date** _____

Signature

Parent: _____ **Date** _____

Signature

INSTRUMENT CHECK-OUT FORM

LITHONIA HIGH SCHOOL BAND

School Year: _____

STUDENT NAME: _____ GRADE: _____

INSTRUMENT: _____ MAKE: _____

MODEL: _____ CONDITION: _____

SERIAL NUMBER: _____ SCHOOL NUMBER: _____

VALUE (of replacing the instrument): _____

ACCESSORIES: Case _____ Mouthpiece _____ Neck _____ Bits/Adaptor _____

Neck Strap _____ Mute _____ Drum Head(s) _____ Leveling Bar _____

Leg Rest _____ Pneumo Pro _____

Other: _____

AGREEMENT

I acknowledge assignment of the above-described instrument to my child. I accept responsibility for due and proper care while it is in our possession and agree to return it in satisfactory condition when it is called for.

Parent/Guardian's Name _____

Address _____ City _____ GA Zip Code _____

Home Phone _____ Cell Phone _____

E-mail _____

Student's Signature _____ Date: _____

Parent/Guardian's Signature _____ Date: _____

Lithonia High School Marching Band
Student Registration Form

Student Information

Name: _____

Street Address: _____

City: _____ State: _____ Zip Code: _____

Home Phone: _____

Student Email Address: _____

Student Cell: _____

Grade Level: _____ Instrument: _____

Emergency Contact Information

Name: _____ Phone Number: _____

Relationship to Student: _____

Family Physician/ Healthcare Provider: _____

Office Location: _____

Phone Number: _____

Parent (Legal Guardian) Information

Mother's Name: _____ Work Number: _____

E-mail Address: _____ Cell Number: _____

Father's Name: _____ Work Number: _____

E-mail Address: _____ Cell Number: _____

2017-2018

Lithonia High School/

Date	Opponent/Event	Home /Away	Time	Stadium
Fri, Aug. 18	Carver, Atlanta	Home	5:15 PM	Godfrey
Sat, Aug. 26	Redan	Home	7:30 PM	Hallford
Fri, Sept. 1	Luella	Away	7:30 PM	Luella
Fri, Sept. 8	OPEN			
Fri, Sept. 15	Meadowcreek	Away	7:30 PM	Meadowcreek
Sat, Sept. 23	Westlake (LMS Night)	Home	7:30 PM	Avondale
Sun, Sept. 24	MLK BOTB		3-7 PM	Hallford
Fri, Sept. 29	BYE			
Tues, Oct. 3	DCSD Marching Band Festival		2:00 PM	Hallford
Fri, Oct. 6	Columbia	Away	7:30 PM	Avondale
Sun, Oct. 8	Band Room Nation's Vanguard Invitational BOTB			TBD
Sat, Oct. 14	Chamblee	Away	7:30 PM	North DeKalb
Fri, Oct. 20	SW DeKalb (Homecoming)	Home	8:00 PM	Godfrey
Fri, Oct. 27	Miller Grove (Sr. Night)	Home	5:15 PM	Hallford
Fri, Nov. 3	Arabia Mountain	Away	5:15 PM	Godfrey
Sat/Sun, Nov 4-5	High Stepping Nationals			A.J. Simeon Stadium High Point, NC
Sun, Nov 5	Band Room Nation's Cadence Percussion Challenge			**Lithonia HS**
Sat, April 4	Cane Ridge Jamboree			Cane Ridge HS

*Items shaded grey are outside of the football schedule.

*Nationals are in North Carolina and we will have to pay to travel. We have been invited to host the Cadence percussion challenge and this will be an opportunity to raise funds for travel.

Contact Information

Lithonia High School

2440 Phillips Road, Lithonia, GA 30058

678.676.2902 (Main)

678.676.2991 (Band Room)

Mr. Darrick L. McCray, Principal

Lithonia High School

Band Booster Board Association

PO Box 1288

Lithonia, GA 30058

Email: lithoniaband@gmail.com

Website: www.lithoniaband.com

Please visit the LBBBA website (www.lithoniaband.com) where you will be able to submit your band booster membership registration form online. You will also be able to pay your dues as well as submit your fundraiser payments through PayPal on our secure site.